



CEDARBERG

Quality Products for Industry

- **Snap-Loc Systems**
- **Shop Accessories**
- **Phase Converters**



Male Pipe Connectors



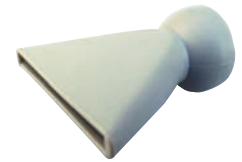
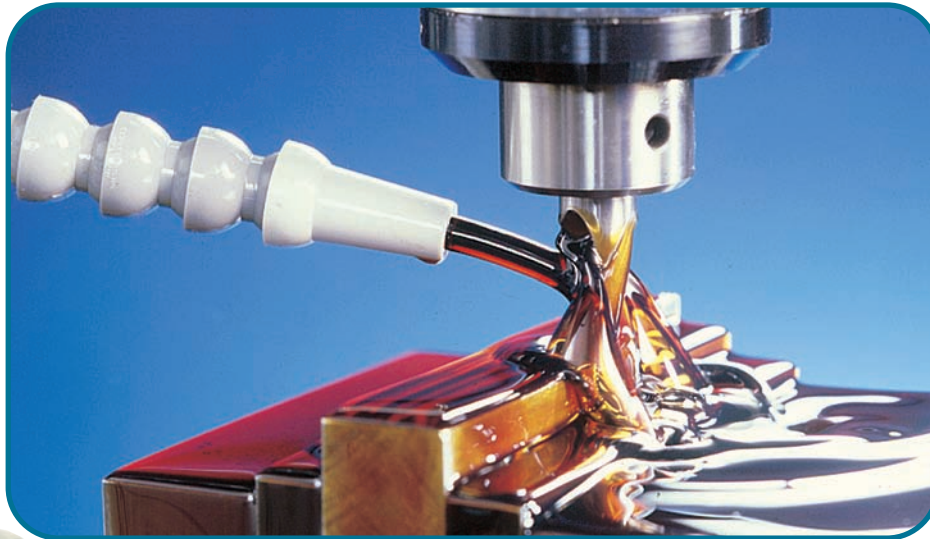
Hose Assemblies



Round Nozzles



Female Pipe Connectors



Flare Nozzles



Female Hose Connectors



Side-Spray Nozzles



90 Degree Elbows



90 Degree Nozzles

Snap-Loc Systems

For use with Air / Liquid / Vacuum



Y-Fittings



Valves



Extension Segments



E-Z Mist



Magna-Flow

Adjustable Length And Interchangeable Components With Easy Hand Assembly

Available in 1/4", 1/2" and 3/4" (Inside Diameters)

Serving Industry Worldwide



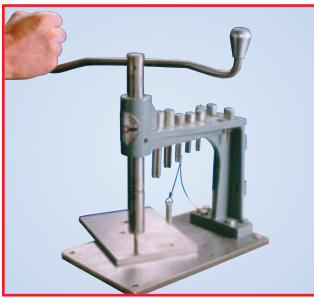
CEDARBERG COMPANIES

Shop Accessories



Opti-Light

20 Watt Halogen lamp with integral reflector and glass lens. Snap-Loc flexible arm with 8-foot cord and magnetic base. 115 Volt Plug-in transformer. Lamp replacement is quick and easy. Simply remove Spring Clip Retainer to access lamp and socket.



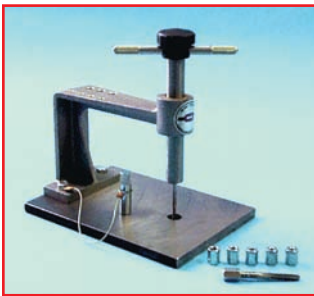
E-Z Tapper

Be assured of straight, perpendicular tapped holes. Complete with tap guide, precision ground work table, tap spindle wrench, and 9 steel tap adapters: #8, #10, 1/4", 5/16", 3/8", 7/16", 1/2", 5/8", and 3/4". Taps not included. Size and weight makes unit portable.



Opti-View

Magnification at a glance for convenient inspection, assembly or quality control. Magnification of 2X. Stays in position. Arm flexes easily to desired position and stays there. Opti-View can be easily moved into use or out of the way. Eases eye fatigue when working with small parts.



Mini-Tapper

Smaller version of above E-Z Tapper. Complete with tap guide, precision ground work table, tap spindle wrench, and 7 steel tap adapters: #0-#6, #10, #12, 1/4", 5/16". Large dia. ribbed handle with feather touch control for sensitive tapping. Taps not included. Size and weight makes unit portable.

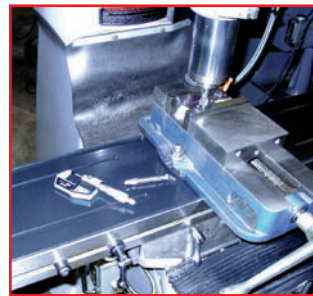
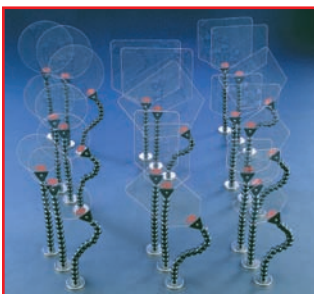


Table Guard & Tote

Keep your tools in easy reach. Stops chips from falling into "T" slots. Easy way to carry your tools. Specially grooved to fit right into table's "T" slots. Heavy duty plastic—won't dent, chip, or peel. Fits easily around vises and swivel bases. Outside rib is molded to fit vise contour.



Opti-Shield

Reduces the aggravation of flying chips and splashing coolants. 360 degree adjustability. Highly durable clear polycarbonate shield. Magnetic base holds firmly in position. Flexible Arm. Shield stays in place. Adjustable length. A variety of replacement shield sizes available.



E-Z Skim

Oil Skimmer effectively removes unwanted oil from coolant tanks. Belt arm pivots in 15 degree increments for use in deep or shallow tanks. 1" wide Polyurethane belt extends vertically 16" into tank. Removes up to 1 gal. of oil or more per hour depending on type of oil. Two models available.

CEDARBERG COMPANIES

Phase Converters



Models available
in sizes from
Fractional HP to 10 HP

Series 1B Static Phase Converters
Permit Operation Of 220 Volt 3 Phase
Motors On Single Phase Current

Your selection must be based on the horsepower of the largest motor to be started. Once running, smaller motors can be started one at a time.



Models available
in sizes from
Fractional HP to 10 HP

Series 3 Static Phase Converters
Provide Continuous 3 Phase Power to
220 Volt 3 Phase Motors From 220 Volt
Single Phase Current

Your selection must be based on the horsepower of the largest motor to be operated. Smaller motors may be started while the motor within the converter's range remains running.



Models available
in sizes from
1 HP to 10 HP

Standard Duty Rotary Type Phase Converters
Produce Continuous 3 Phase Power to 220 Volt
3 Phase Motors from 220 Volt
Single Phase Current

Your selection must be based on the largest horsepower motor to be operated. This converter is designed to operate total horsepower loads up to 2 times the nameplate rating.

Designed for light starting and running loads (such as drill presses, mills, grinders, etc...) where generated 3 phase power is preferred.



Models available
in sizes from
1 HP to 30 HP

Heavy Duty Rotary Phase Converters
Provide Balanced 3 Phase Power for Maximum
Motor Efficiency From Single Phase Current

The largest horsepower motor you intend to start should not exceed the converter's nameplate rating. These converters are designed to run horsepower loads up to 3 times the nameplate rating.

Designed for medium to heavy starting and running loads (such as gear head lathes, flywheel and hydraulic applications, CNC machinery, etc.) when maximum motor efficiency is required.